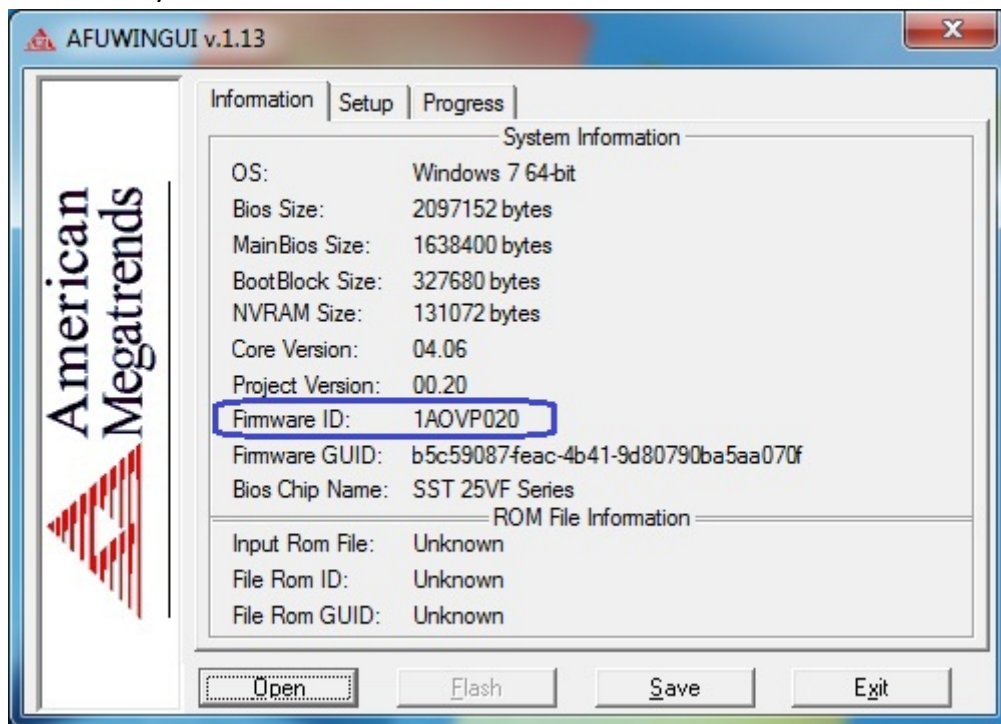


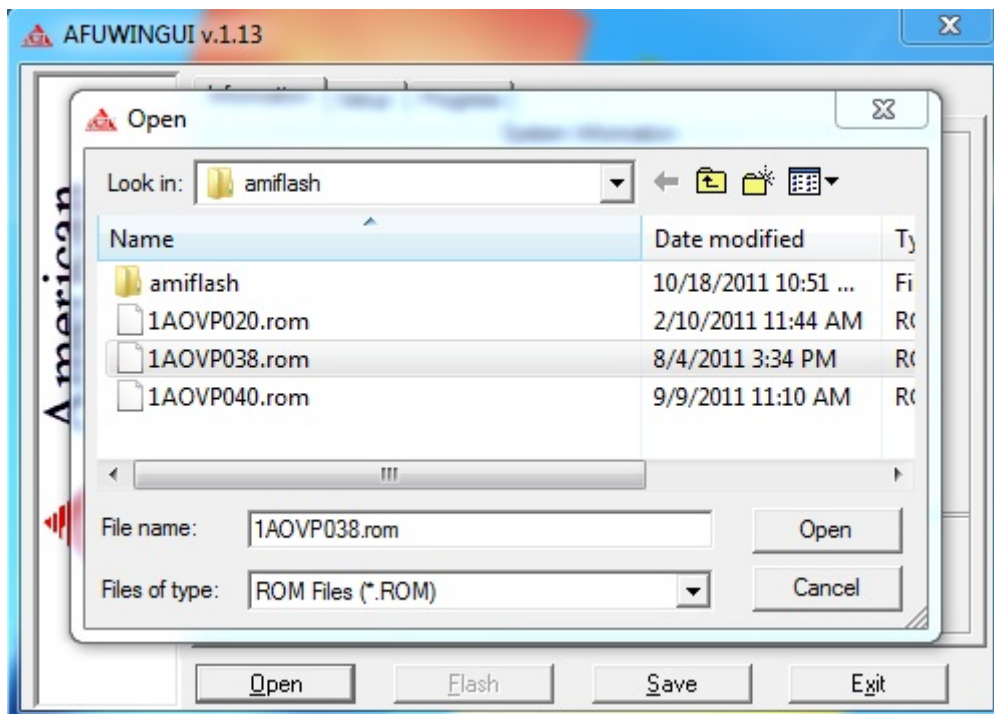
AMI AFUWINGUI GUIDE

Please follow below steps to flash your BIOS.

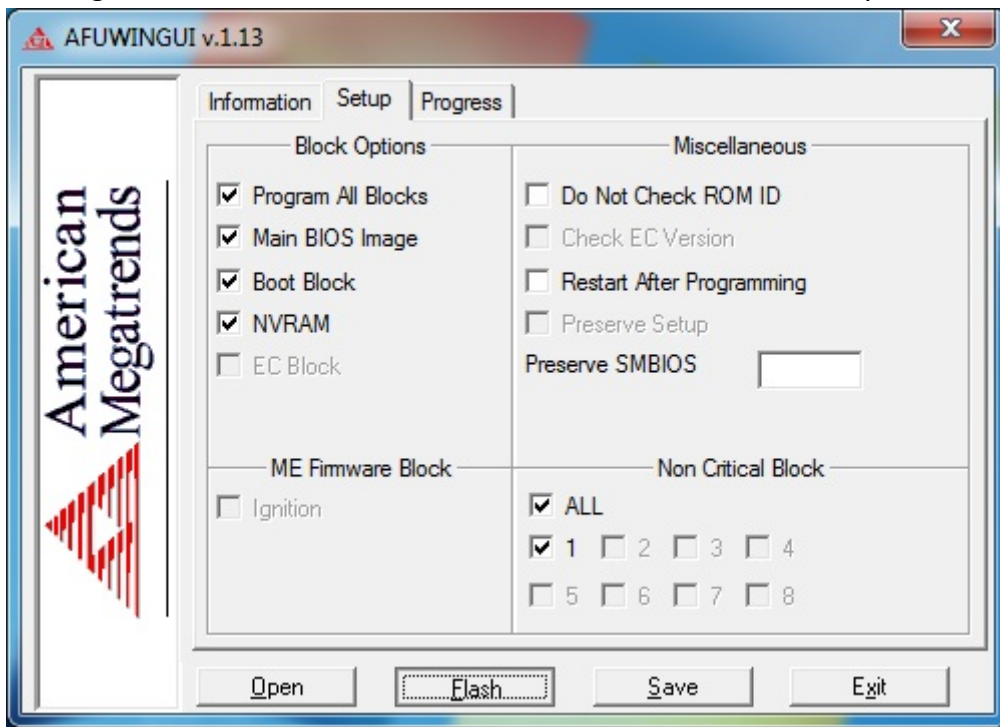
1. Run AFUWINGUI then you can find current BIOS version.



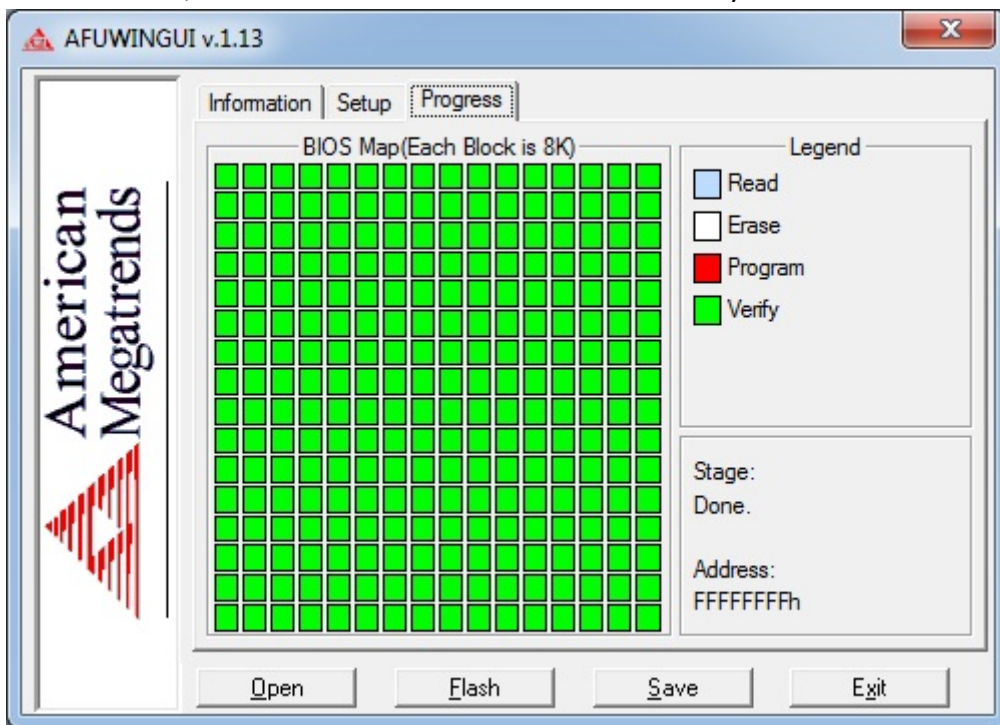
2. Click the "Open" button to load new BIOS file.



3. Please select “Program All Blocks” item, then click the “Flash” button to flash your BIOS.



4. When flash BIOS finished, exit the AFUWINGUI and shutdown the system.



5. Please to do clear CMOS when the system shut downs.

6. Power on your system and press Del key taking you to the BIOS CMOS setup .

- Set up “Restore Defaults” item from “Exit” tab . < or pressing “F3” quick function key>
- Set up “System Date and Time” and your preferred settings.
- Set up “Save Changes and Reset” item from “Exit” tab. < or pressing “F4” quick function key>