

**WARNING: Using TrueCrypt is not secure as it may contain unfixed security issues**

This page exists only to help migrate existing data encrypted by TrueCrypt.

The development of TrueCrypt was ended in 5/2014 after Microsoft terminated support of Windows XP. Windows 8/7/Vista and later offer integrated support for encrypted disks and virtual disk images. Such integrated support is also available on other platforms (click [here](#) for more information). You should migrate any data encrypted by TrueCrypt to encrypted disks or virtual disk images supported on your platform.

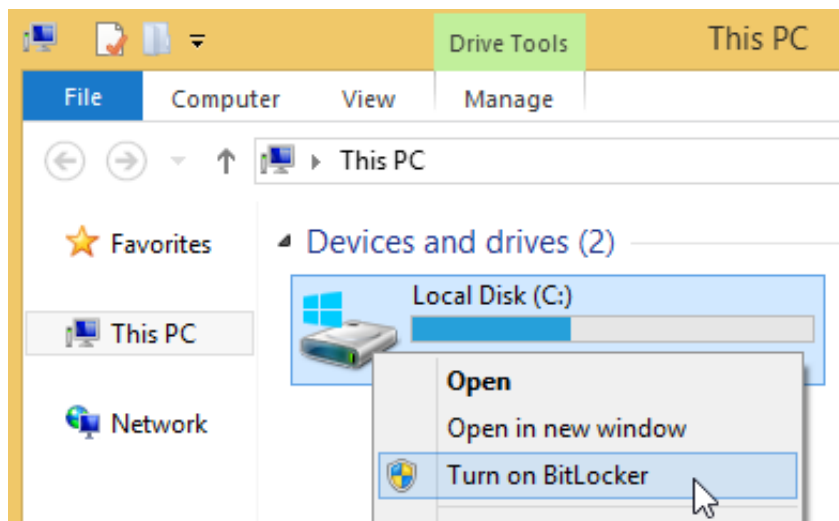
## Migrating from TrueCrypt to BitLocker:

### If you have the system drive encrypted by TrueCrypt:

1. Encrypt the drive by BitLocker first. Open the Explorer:

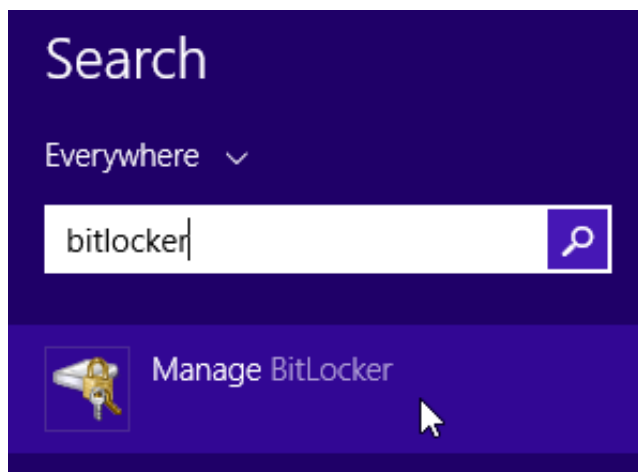


2. Click the drive C: (or any other drive where Windows is installed) using the right mouse button and select **Turn on BitLocker**:



If you do not see the **Turn on BitLocker** menu item, click [here](#).

Alternatively, use search in the **Start** menu or screen:



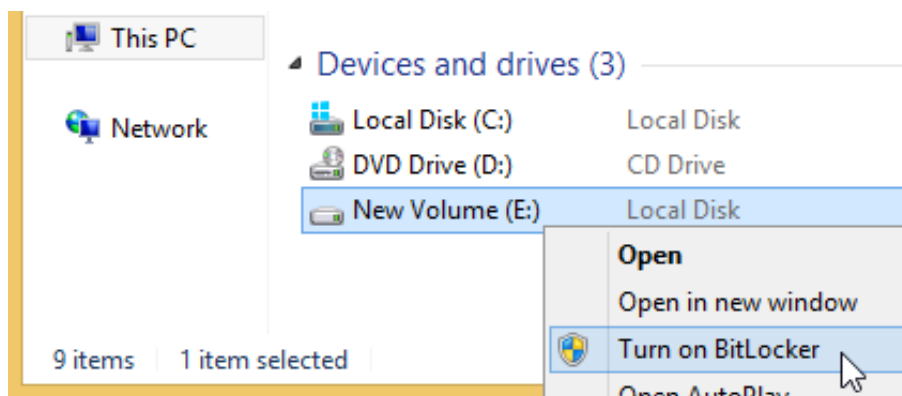
If you do not see the BitLocker item, click [here](#).

If BitLocker reports Trusted Platform Module (TPM) unavailable error, click [here](#).

3. Decrypt the system drive in TrueCrypt (open **System** menu and select **Permanently Decrypt System Drive**).

### If you have a non-system drive encrypted by TrueCrypt:

1. If you have a spare or backup drive (having sufficient space to store all data you need to migrate to BitLocker), encrypt it by BitLocker (click the drive in Explorer using the right mouse button and select **Turn on BitLocker**):



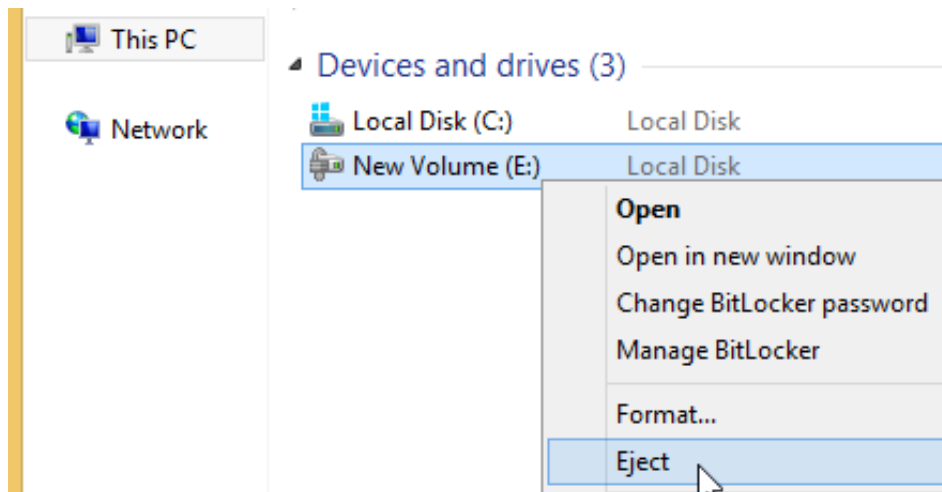
If you do not see the **Turn on BitLocker** menu item, click [here](#).

2. Copy all data from the drive encrypted by TrueCrypt to the drive encrypted by BitLocker.

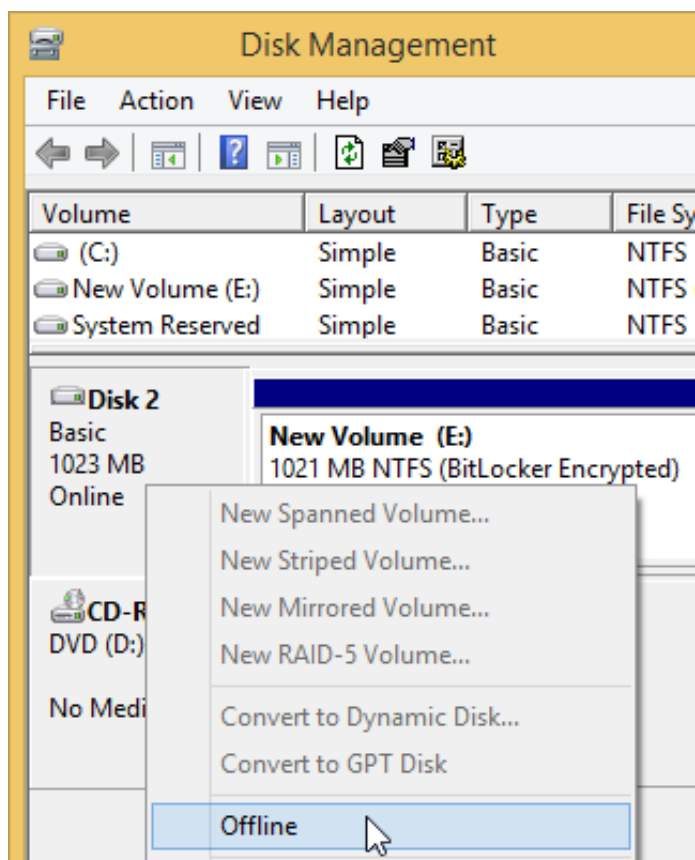
If you do not have a spare drive, first decrypt the drive encrypted by TrueCrypt. Select the drive in TrueCrypt, open the **Volumes** menu and select **Permanently Decrypt** item (available in version 7.2). Then encrypt the drive by BitLocker.

To mount a drive encrypted by BitLocker, open the drive in Explorer.

To dismount a removable drive encrypted by BitLocker, use **Eject** menu item or **Safely Remove** icon:



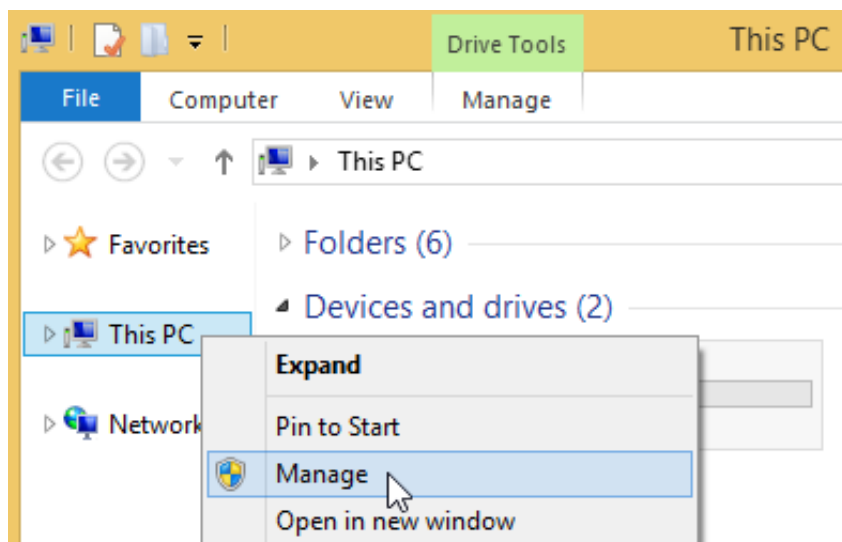
To dismount a non-removable drive encrypted by BitLocker, use **Offline** item in the context menu of the drive in **Disk Management** window:



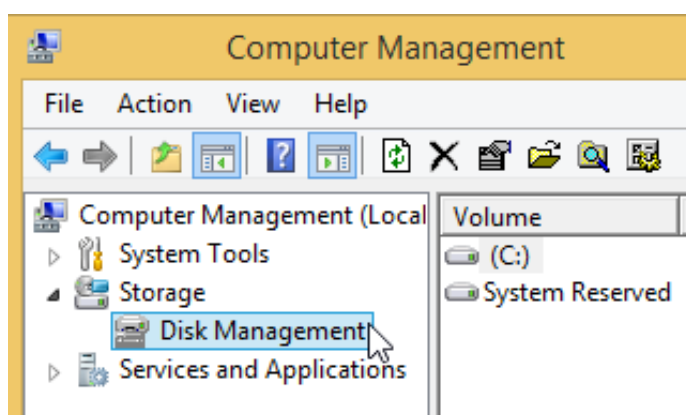
To mount the drive again, use **Online** item in the context menu of the drive.

### If you have a file container encrypted by TrueCrypt:

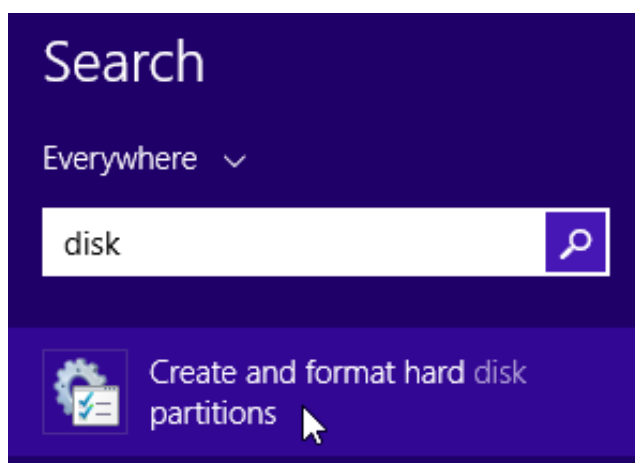
1. Create a new virtual disk file (VHD). Open the **Computer Management** window (click the **Computer** or **PC** icon using the right mouse button and select **Manage**):



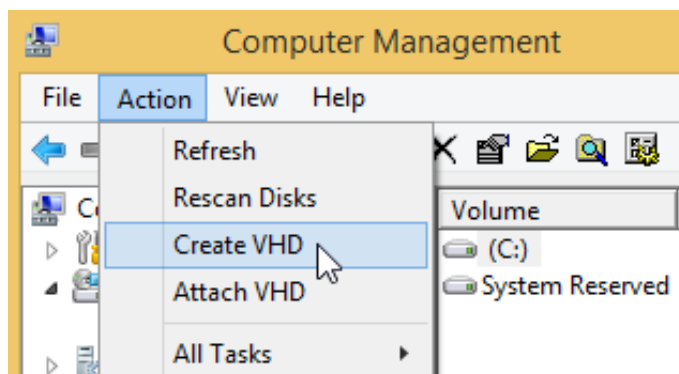
2. Select the **Disk Management** item:



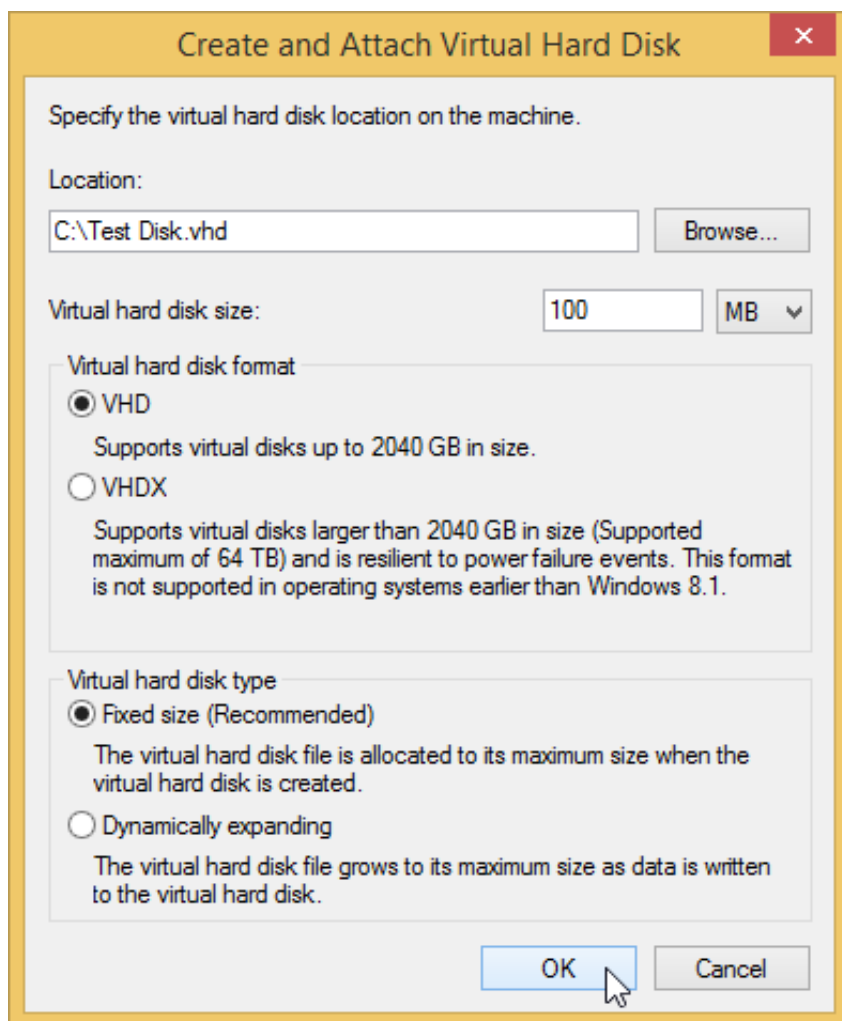
Alternatively, use search in the **Start** menu or screen:



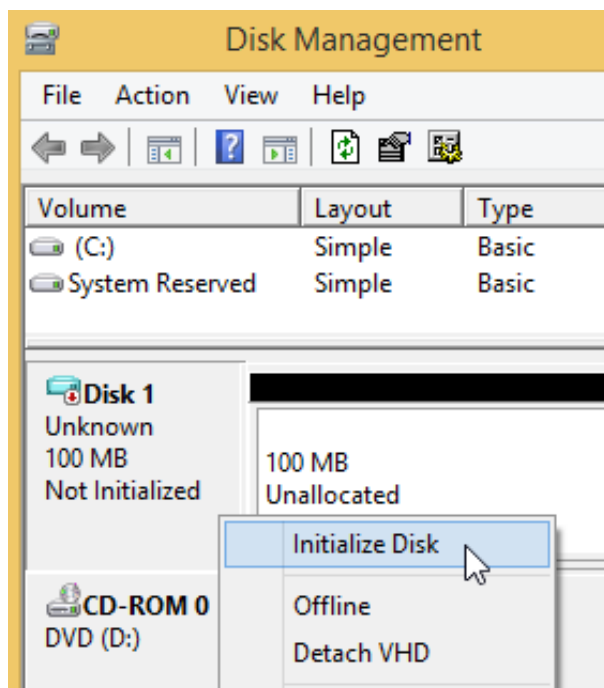
3. Open **Action** menu in the **Disk Management** window and select **Create VHD**:



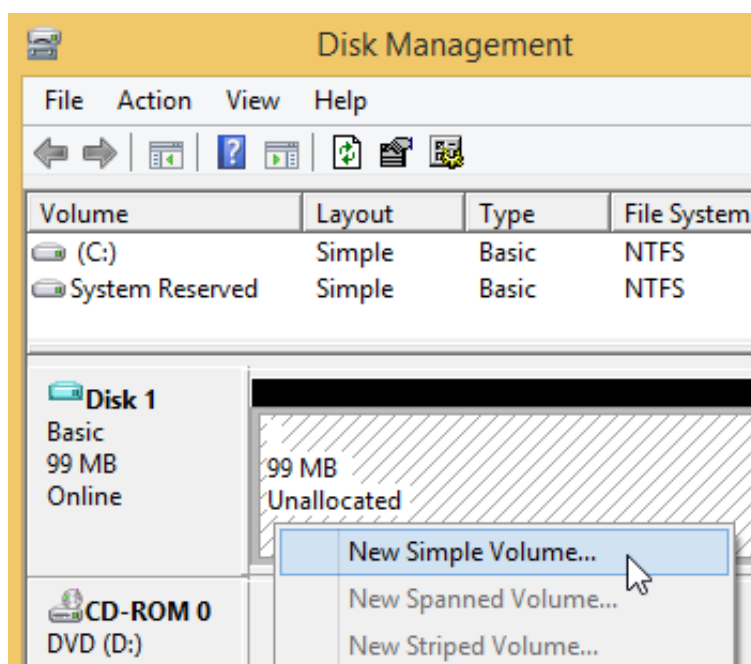
4. Create and attach a new virtual disk file (VHD):



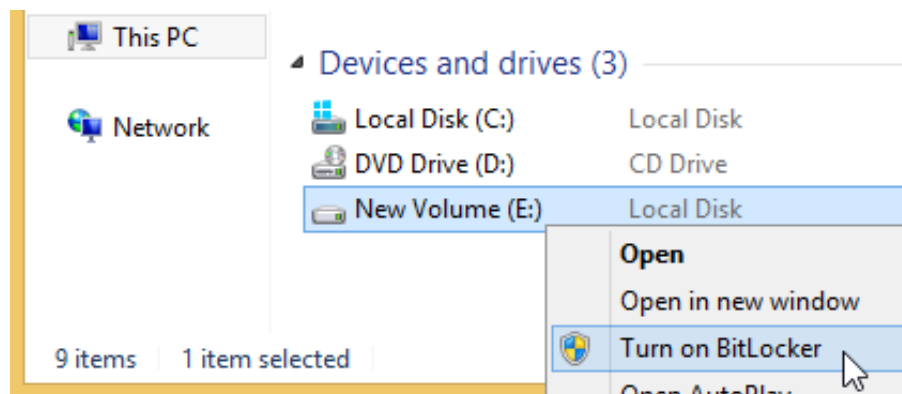
5. Initialize the new virtual drive. Click the new disk icon using the right mouse button and select **Initialize Disk**:



6. Create a partition on the virtual drive. Click the unallocated space using the right mouse button and select **New Simple Volume**:



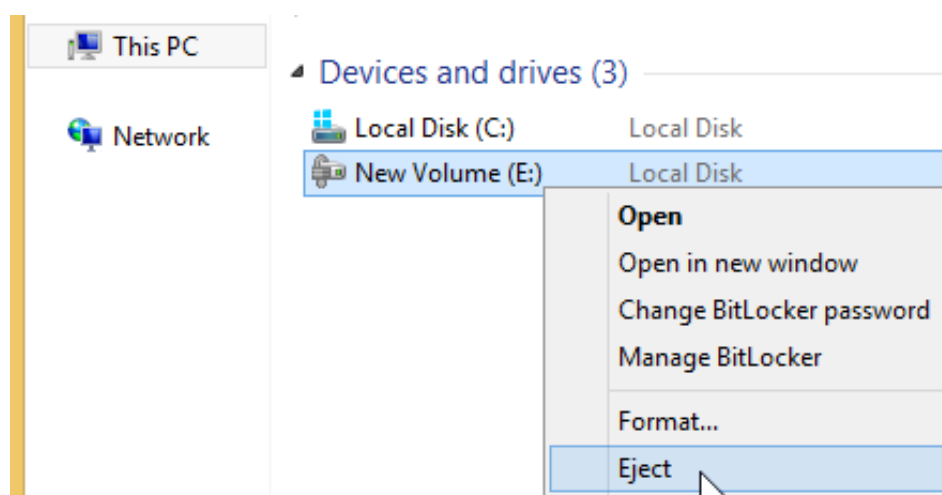
7. Encrypt the new virtual drive by BitLocker. Click the drive in Explorer using the right mouse button and select **Turn on BitLocker**:



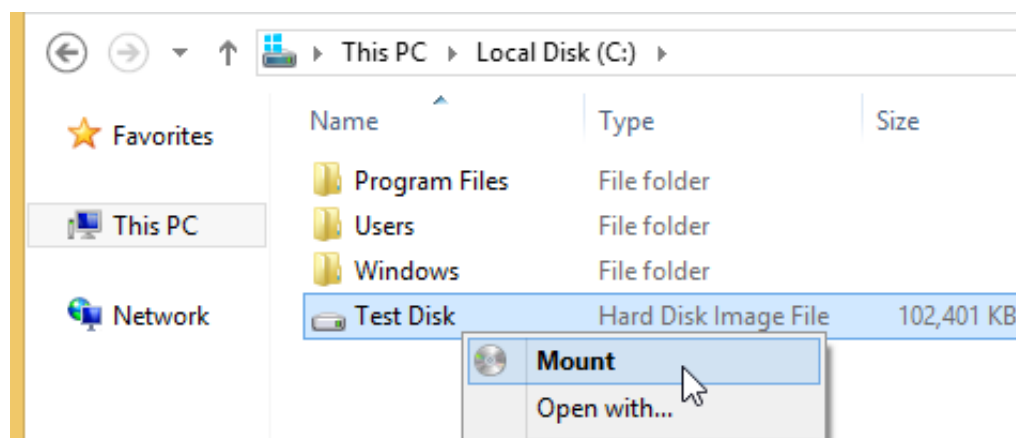
If you do not see the **Turn on BitLocker** menu item, click [here](#).

8. Copy all data from the mounted TrueCrypt file container to the new virtual drive encrypted by BitLocker.

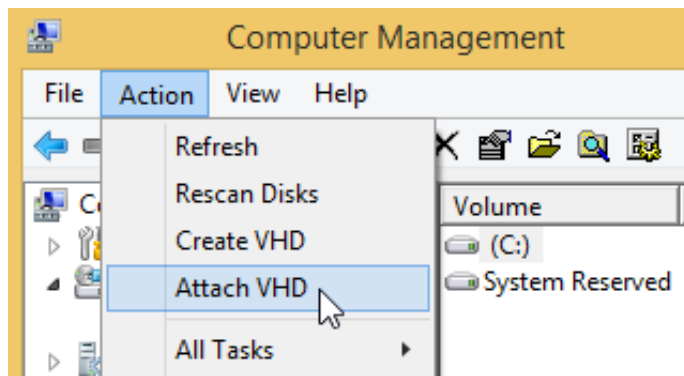
To dismount the drive, click the drive using the right mouse button in **Explorer** and select **Eject**:



To mount the drive again, double click the virtual disk file (requires Windows 8 or later):



Alternatively, use **Attach VHD** in the **Action** menu of the **Disk Management** window:



## Download:

### WARNING: Using TrueCrypt is not secure

You should download TrueCrypt only if you are migrating data encrypted by TrueCrypt.

[TrueCrypt 7.2](#)      [sig key](#)

If you use TrueCrypt on other platform than Windows, click [here](#).