



# User Manual

## Content:

### i. Fingerprint Reader Manual for Windows 10-----Page 2-4

Below is the download link of Windows 10 Driver: **(the 1<sup>st</sup> one)**

<http://www.catalog.update.microsoft.com/Search.aspx?q=elan%20fingerprint>

Note: If the Windows 10 version is above 1703, driver is not needed

### ii. Fingerprint Reader Manual for Windows 7&8-----Page 5-7

(Fingerprint Function is not available for super-administrator account )

Below is the download link of Windows 7, Windows 8 Driver: **(the 2<sup>nd</sup> one)**

<http://www.catalog.update.microsoft.com/Search.aspx?q=elan%20fingerprint>

### iii. Smart ID-File Encryption Manual-----Page 8-13

Below is download link of SmartID:

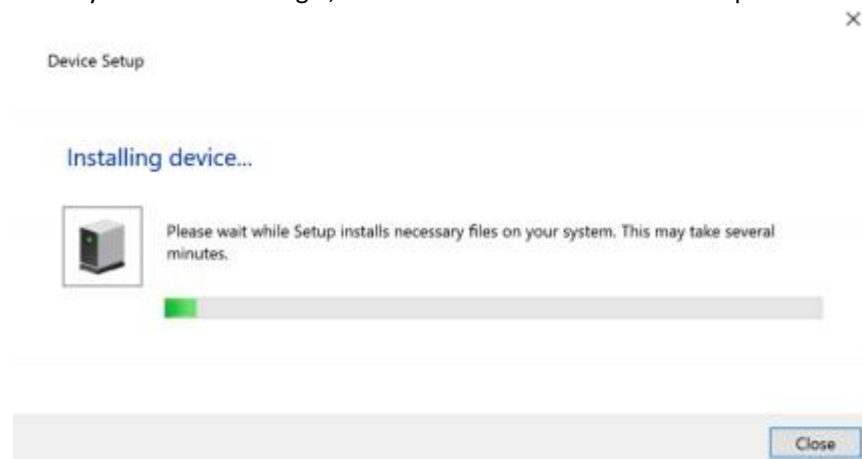
<https://www.sendspace.com/pro/dl/kdvkh6>

Thanks for Choosing our USB finger print dongle  
There are mainly 3 steps as below before experiencing it:

### Step 1:

Kindly note the Hello Dongle supports Windows 10 32/64 Bits OS only

If your Windows 10 Version is 1609 (Windows 10 Redstone) or even newer,driver is not needed  
When you insert the dongle,it will install driver from windows update automatically as below



If not, Let's move to the next step

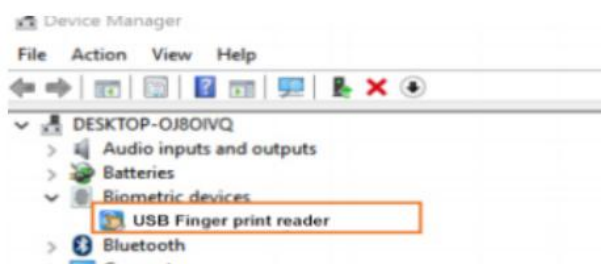
### Step 2:

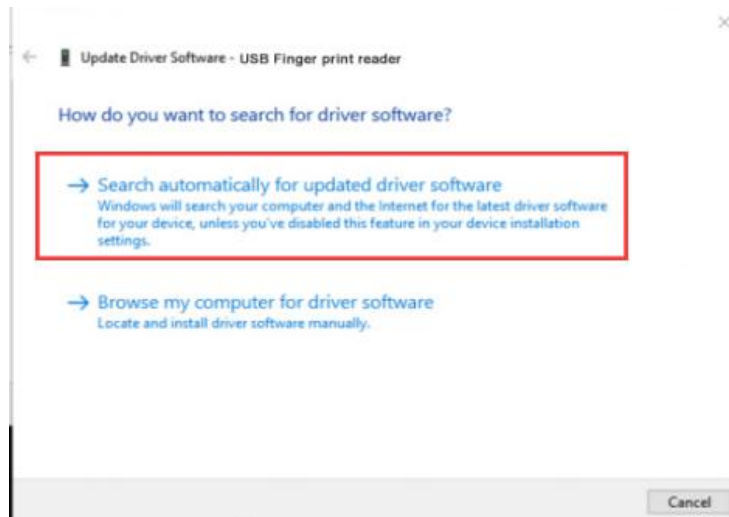
1. Find **Settings --Devices -Device Manager** in windows 10



2.Find "Biometric devices"--USB fingerprint Reader/Sensor with a right mouse-click as below:

3.Then it appears the below,choose "search automatically for updated driver software"  
It will automatically download and install the driver till finished



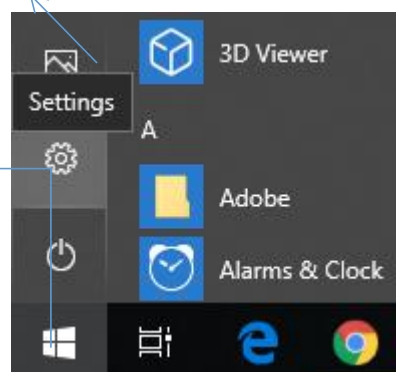


Searching and installing the driver for the dongle as below:



### Step 3:

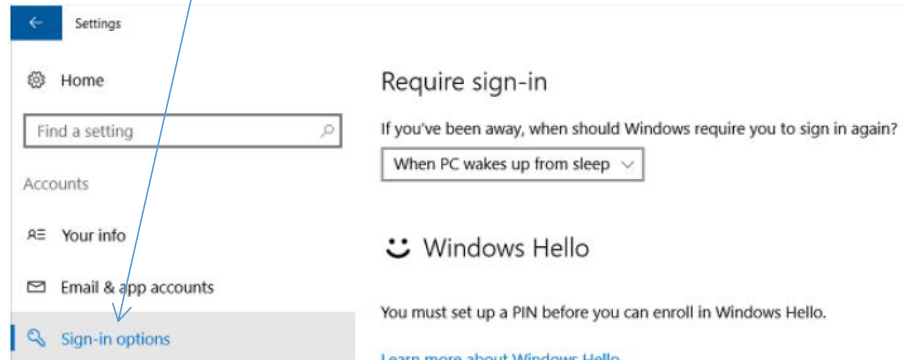
1: Click  , and **Settings**



## 2: Choose **Accounts**:



## 3: Choose **Sign-in Options**



## 4: Setting pin code



## 5: Click add fingerprint to Enroll Fingerprints



## 6: Click Get started and enter PIN Code and complete fingerprints setting



Great, touch sensor again

Try several times to enroll all angles of fingerprints so they can be recognized faster and better

## Windows 7& Windows 8 Manual

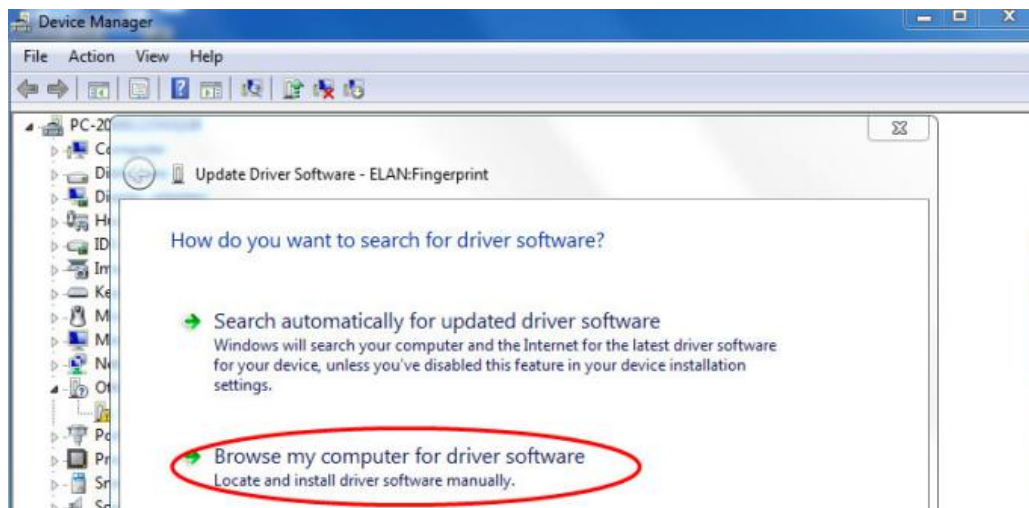
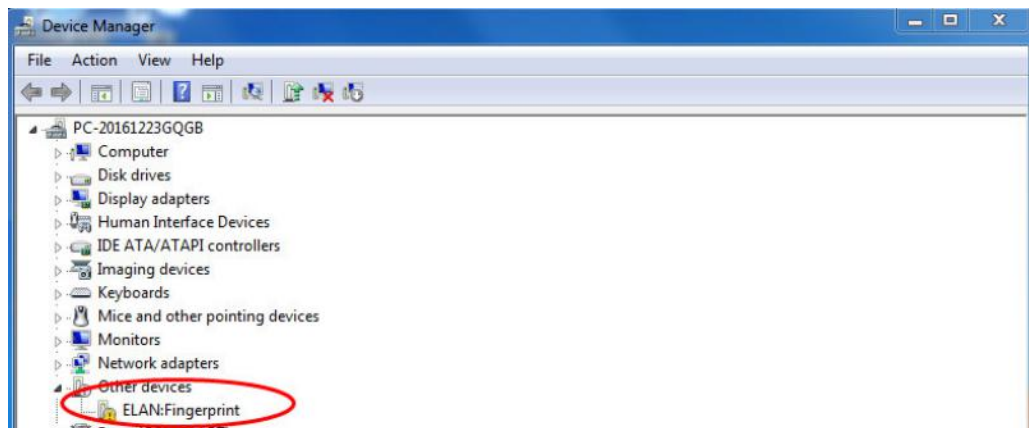
(Windows Hello Function,i.e.,the Fingerprint Function is not available for super-administrator account but for other administrator accounts )

Step 1: My Computer → Control Panel → System and Safety → Windows update  
→ Check the latest Windows update to update latest Windows driver.

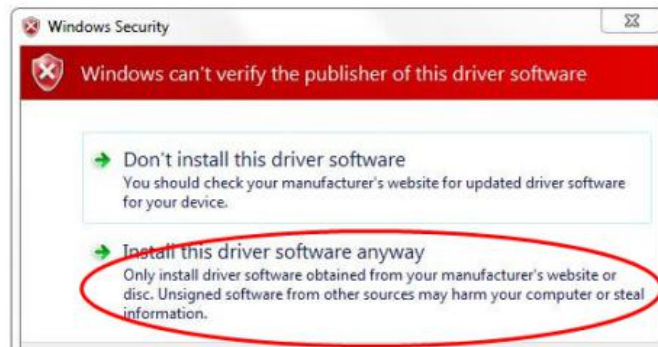
Step 2: Find the fingerprint device

Step 3: Choose the proper driver from the network (or install the driver by manual setting)

After the setting, you can find the “WBF Fingerprint sensor by Device Manager. That means all the setting is finished.

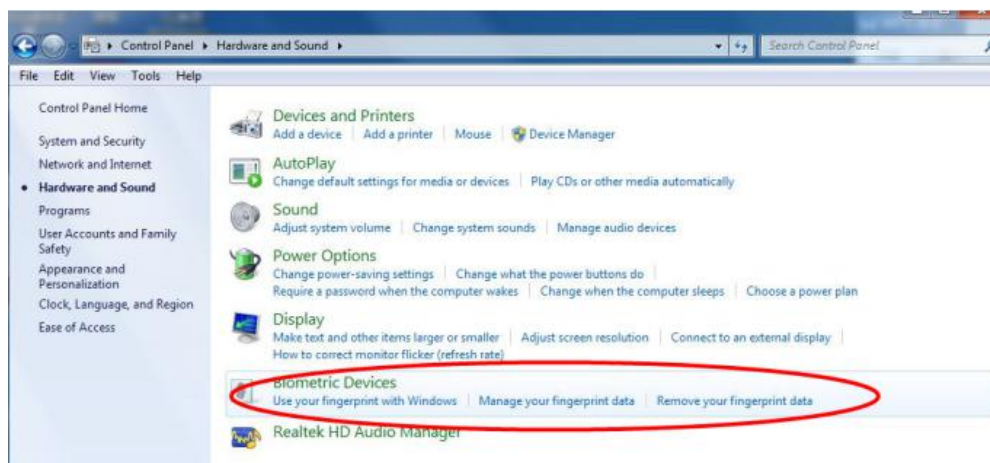


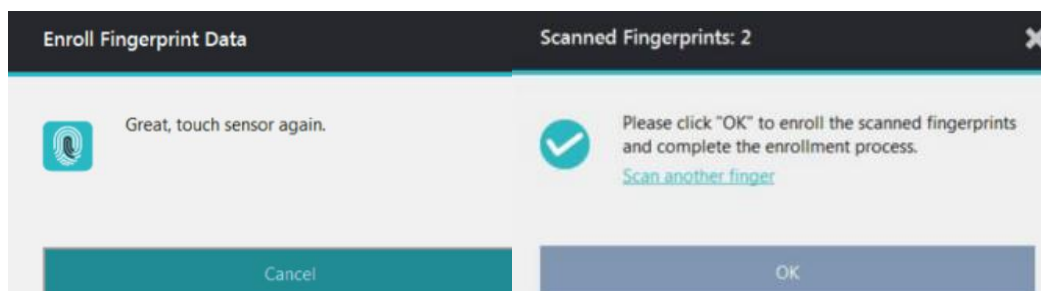
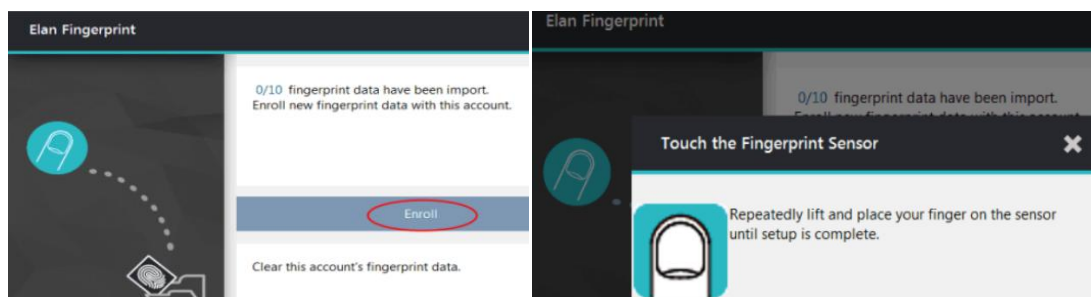
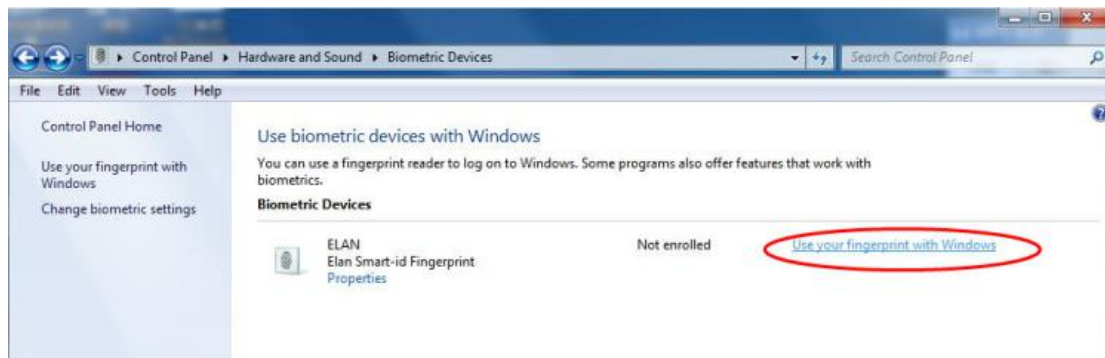
Installing driver software...



After the setting is finished, please click "Control Panel" to check the icon of "Biometric Device" to enroll and manager your fingerprint. After the enrolling of fingerprint, please click the " Yes" button to finish the setting

→ Control Panel → Hardware and Audio → Biometric Device





Now, Congratulations, the Fingerprint Reader function will be working



# Smart ID User Manual

Thank you for using the Smart ID product. This user manual will guide you to adventure the wonderful features of the product.

## 1. How to install Smart ID software

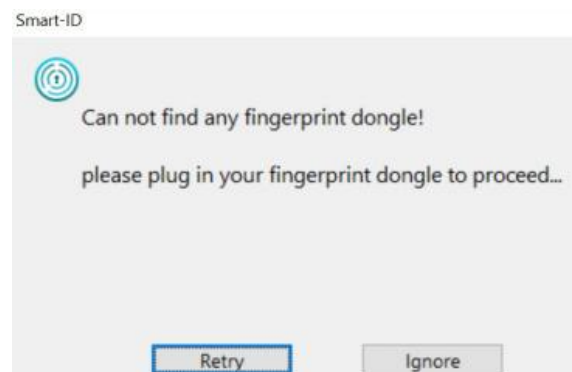
Insert the Smart ID dongle.

Get the SmartID Installer software from <https://www.sendspace.com/pro/dl/kdvkh6>

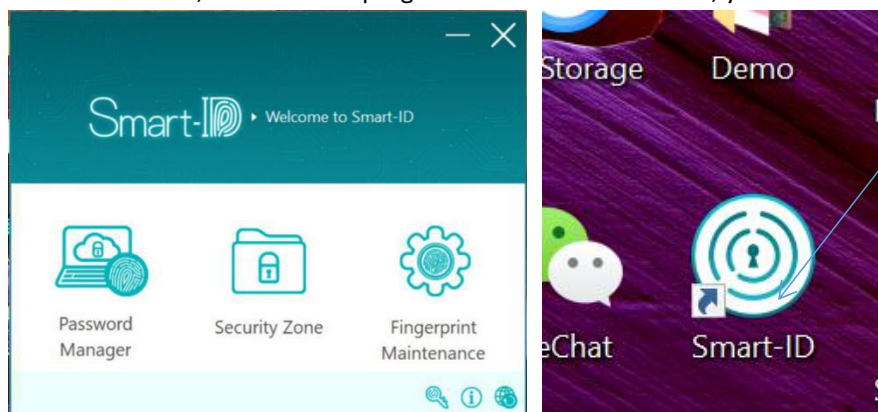
Double click the execution file to install



If you did not plug in the dongle, the following message will pop up. However, you can choose “Ignore” to proceed.

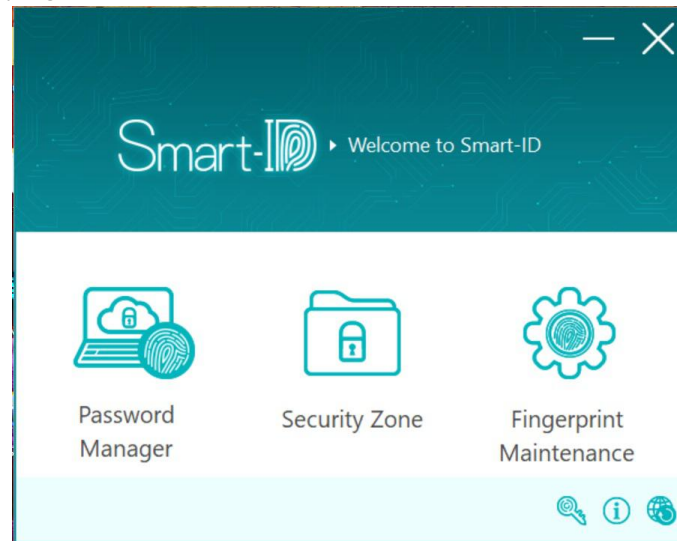


After installation, the Smart-ID program will be launched. Also, you can find the software icon.

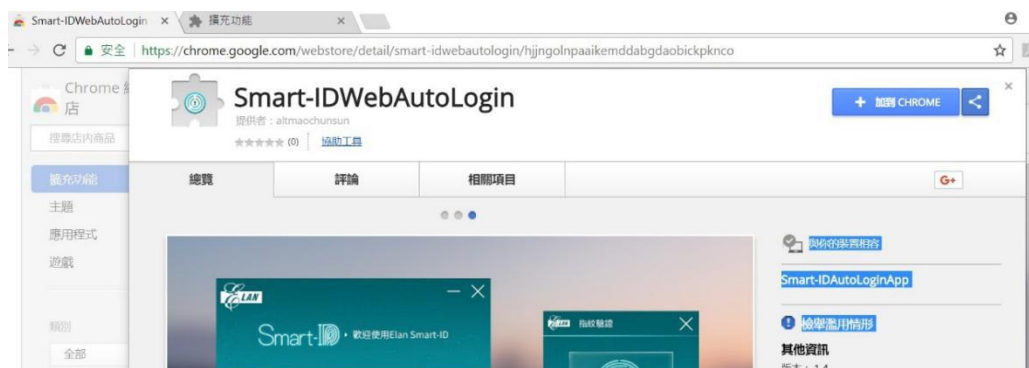




Main panel of the program.



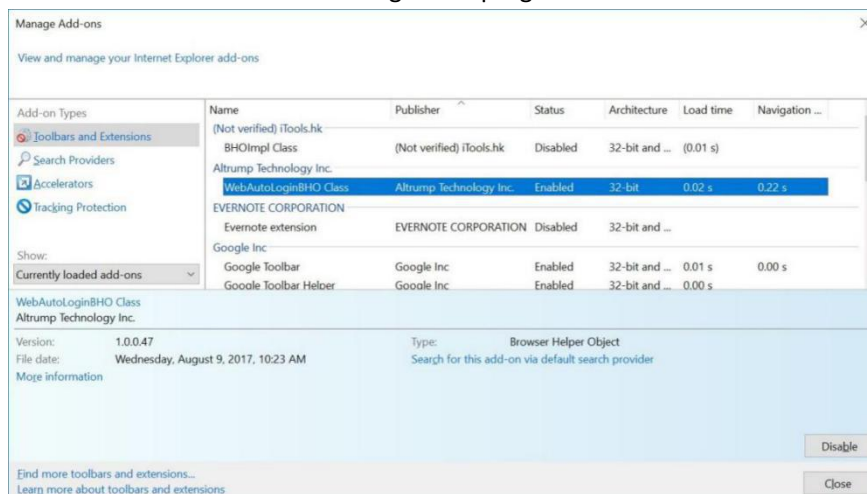
If you have Chrome installed, the following Smart-IDWebAutoLogin program should be install.



Please install the Smart-ID WebAutoLogin and enable the add on program.

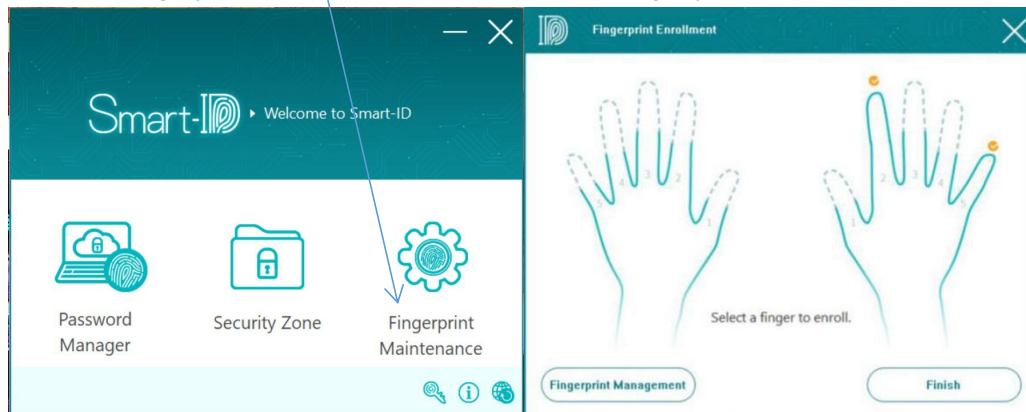


Please make sure the WebAutoLoginBHO program has been activated.

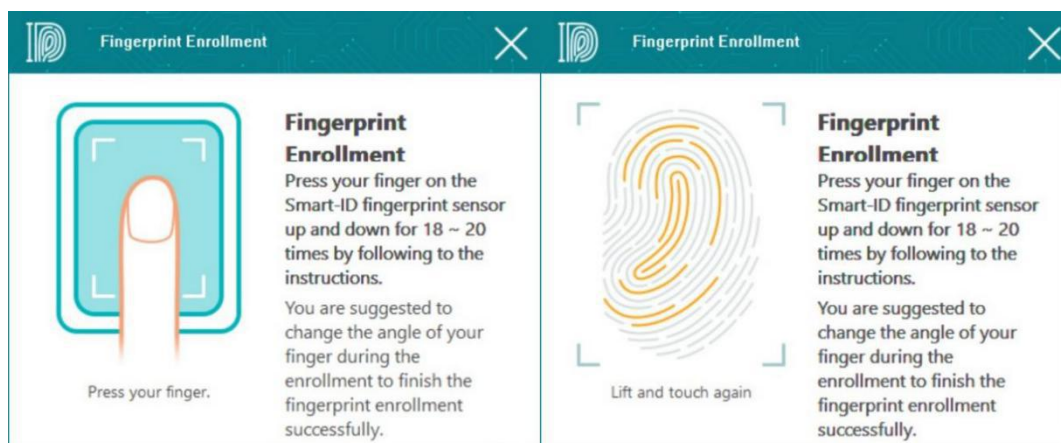


## 2. How to enroll your fingerprint

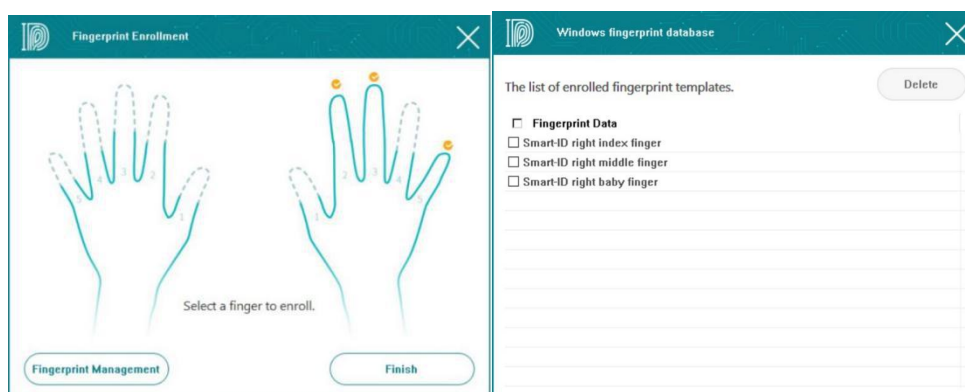
Click the “Fingerprint Maintenance” to choose which finger you would like to enroll.



Follow the instruction on the screen.



After finishing, the finger you enrolled will be check.



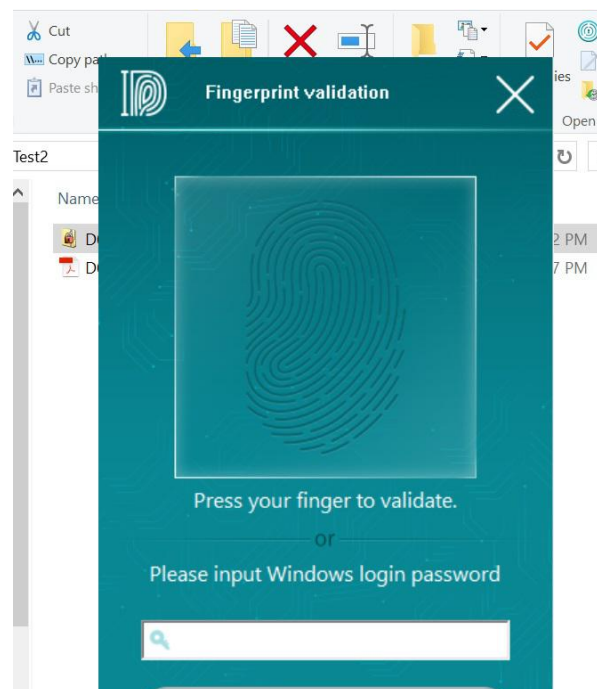
## 3. File/files encryption/decryption.

You can select file/files to encrypt. After selecting the file/files, click the right button of the mouse and select the “Smart ID Encryption”



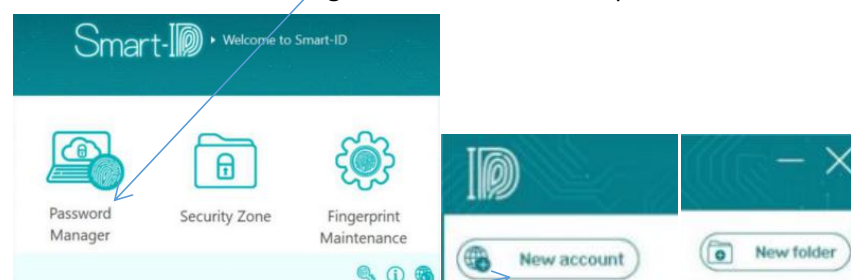
The file/files will be encrypted automatically with showing a lock icon on the file

If you want decrypt the encrypted file, just double click it. The fingerprint validation window will pop up. The validation can be done by enrolled fingerprints or Windows login password.



## 4. Password Manager

Select the “**Password Manager**” feature on the main panel.



You can click the “**New account**” button to add the web site/social media account.

The following IE browser/Chrome will pop up. You can login the web site you would like to add. For example, Facebook. Once you finished the account and password information and click “login” button, a dialog window will pop up.



You could add more web accounts by following the below procedure.



Then, you can check the web site management window, the **Facebook** will be added.

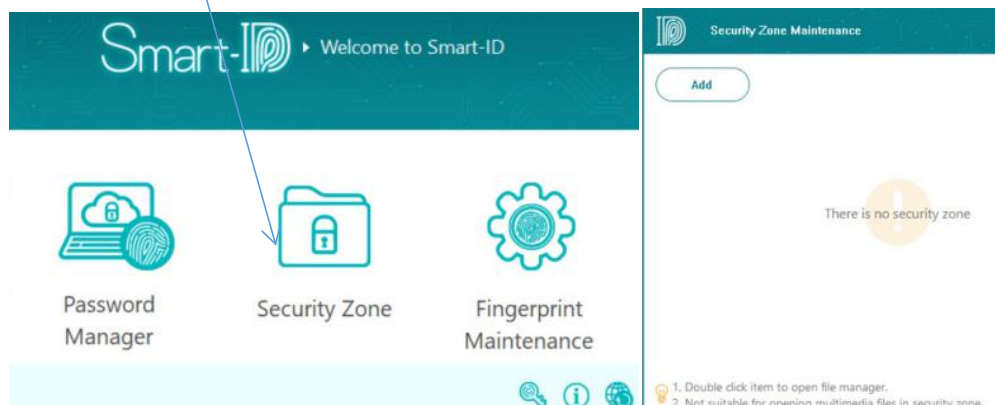
You can do “Login”, “Edit”, or “Delete” by clicking the right button of your mouse on the list.



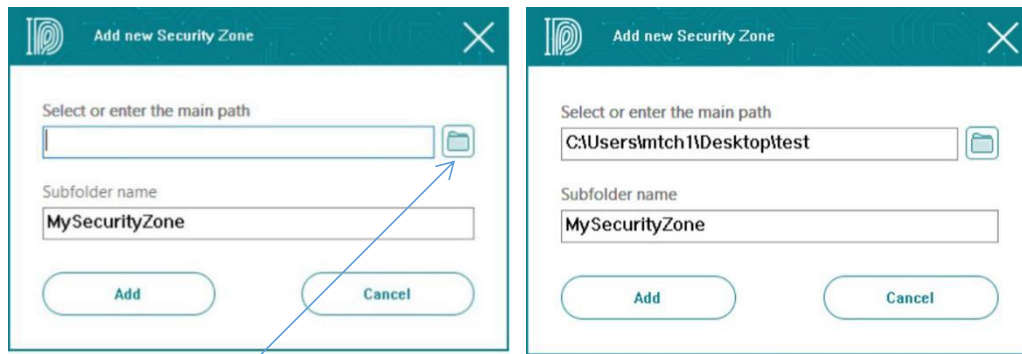
## 5. Security Zone

You can specify a folder as the security zone. Once a file was copied into the folder or created in the folder, it will be encrypted automatically. You could drag and drop a file/folder into the “Security Zone” icon directly. Even, you can open a file by double clicking the file. After editing and saving the file opened, it will be encrypted automatically.

Select “**Security Zone**” feature on the main panel.



You could click the “Add” icon and the zone specify windows will pop up.



Click the rightest button in the path specify area,Then, you can select the path of the security folder.

Then, specify the Security Zone folder name in the Sub folder name.

All the files in the security folder will be encrypted automatically and they need enrolled fingerprints or Windows Passwords to access afterwards